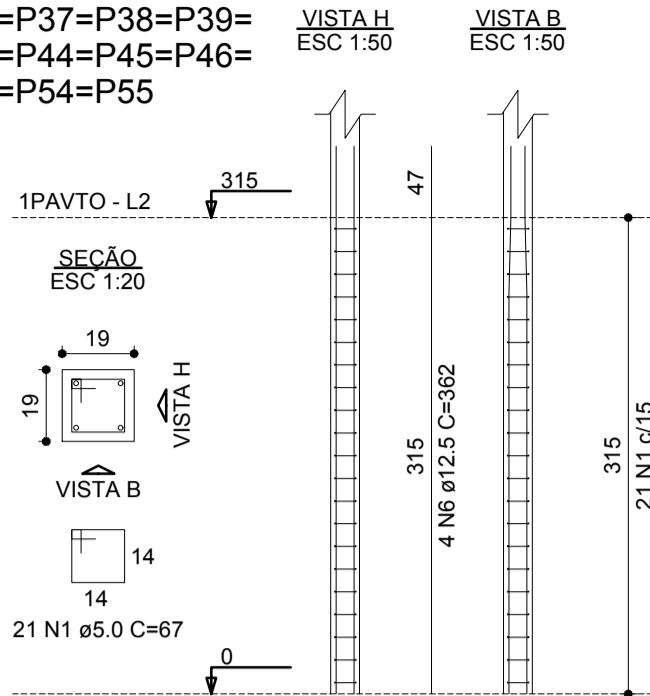
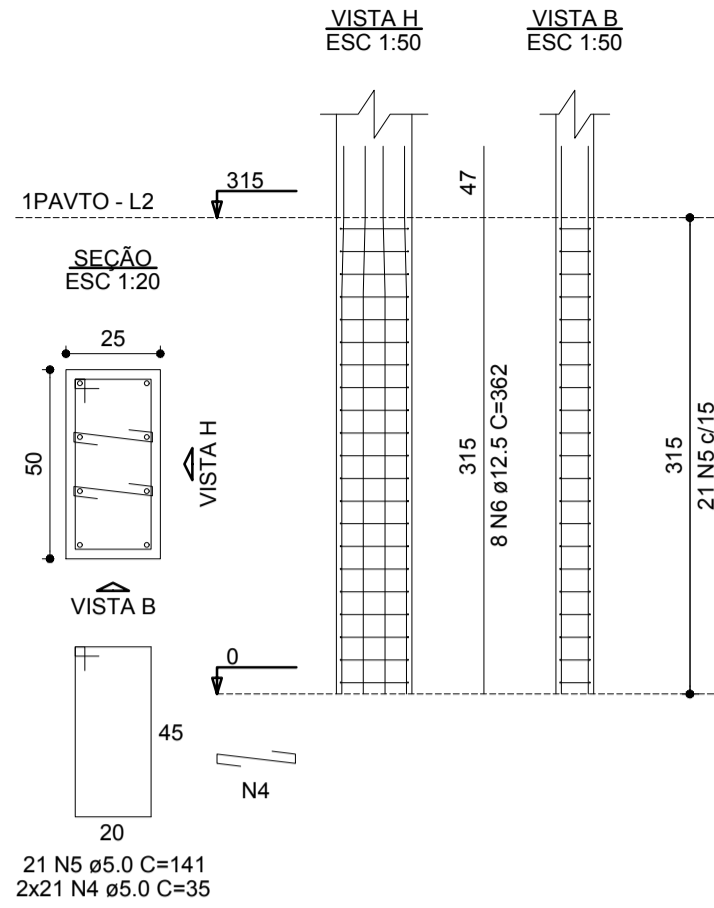


6  
5  
4  
3  
2  
1  
A1

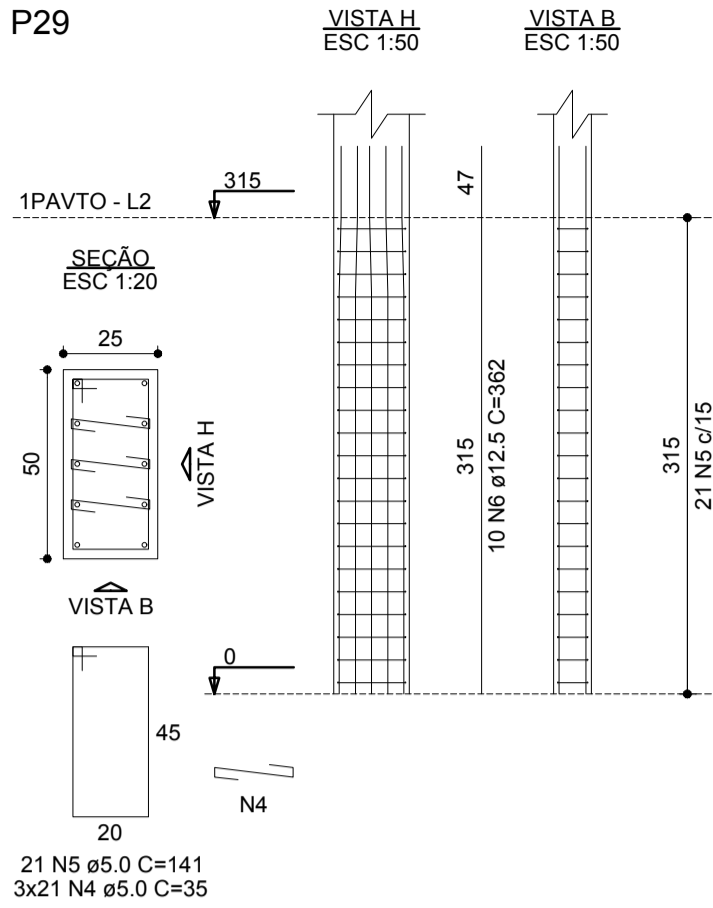
P1=P2=P9=P11=P13=  
=P14=P15=P17=P18=  
=P31=P32=P33=P35=  
=P36=P37=P38=P39=  
=P43=P44=P45=P46=  
=P53=P54=P55



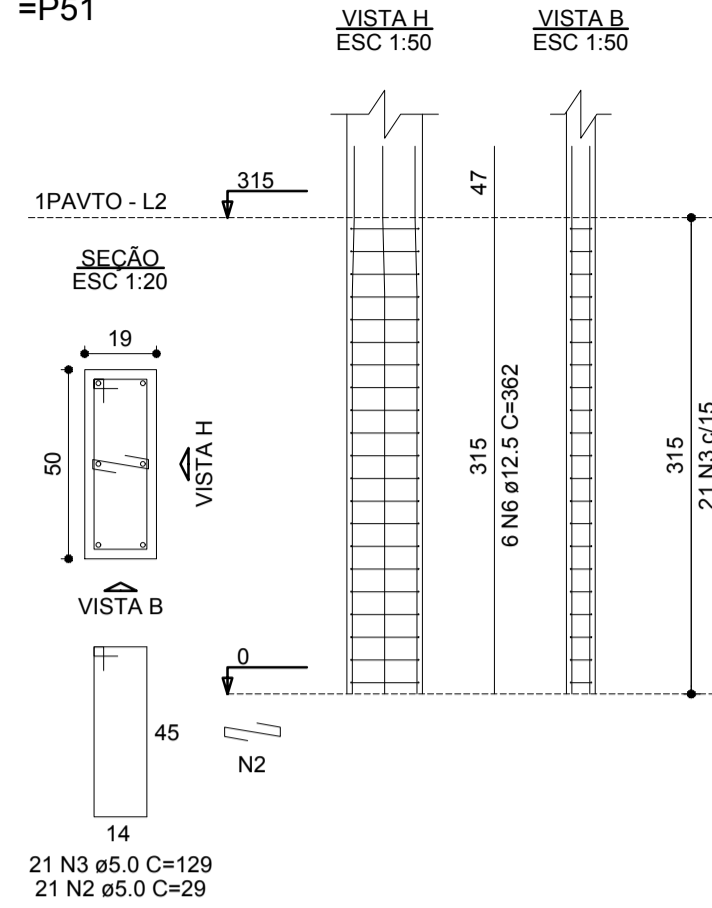
P26=P27=P28



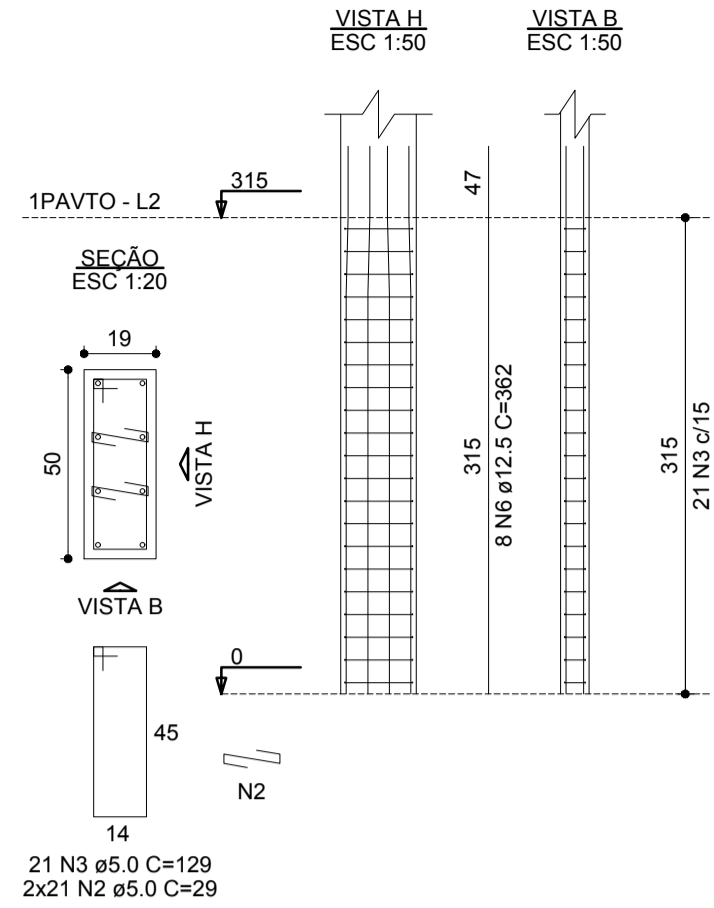
P29



P3=P4=P5=P6=P7=P16=  
=P19=P20=P21=P22=P23=  
=P24=P25=P30=P34=P40=  
=P41=P47=P48=P49=P50=  
=P51



P8=P10=P12=P42=P52



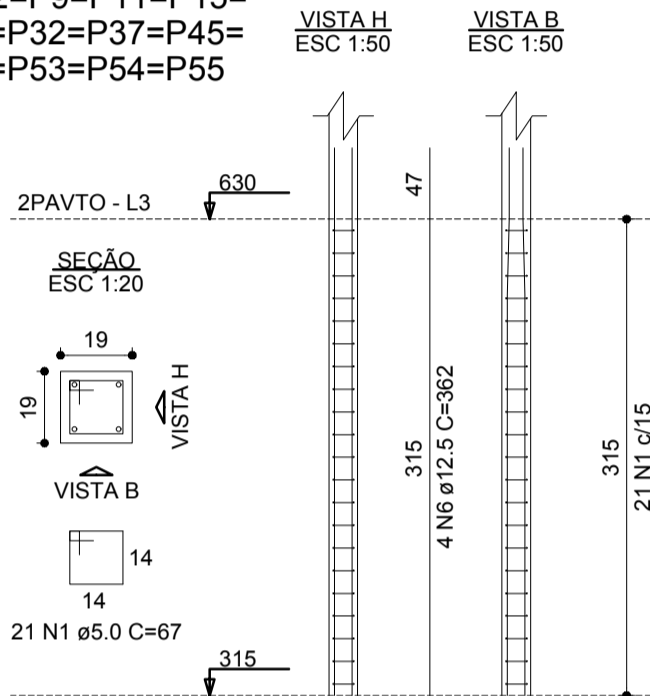
RELAÇÃO DO AÇO					
AÇO	N	DIAM (mm)	QUANT	C.UNIT (cm)	C.TOTAL (cm)
CA60	1	5.0	504	67	33768
	2	5.0	672	29	19488
	3	5.0	567	129	73143
	4	5.0	189	35	6615
	5	5.0	84	141	11844
CA50	6	12.5	302	362	109324

RESUMO DO AÇO			
AÇO	DIAM (mm)	C.TOTAL (m)	PESO + 10% (kg)
CA50	12.5	1093.2	1158.5
CA60	5.0	1448.6	245.6

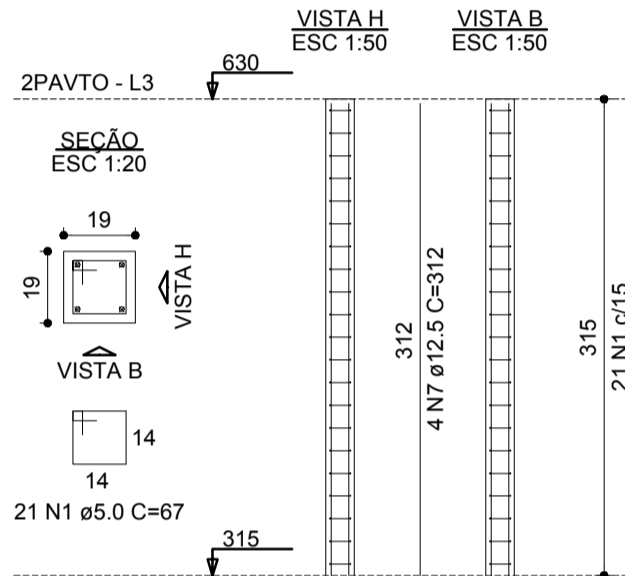
PESO TOTAL (kg)	
CA50	1158.5
CA60	245.6

Volume de concreto (C-25) = 12.38 m³  
Área de forma = 193.73 m²

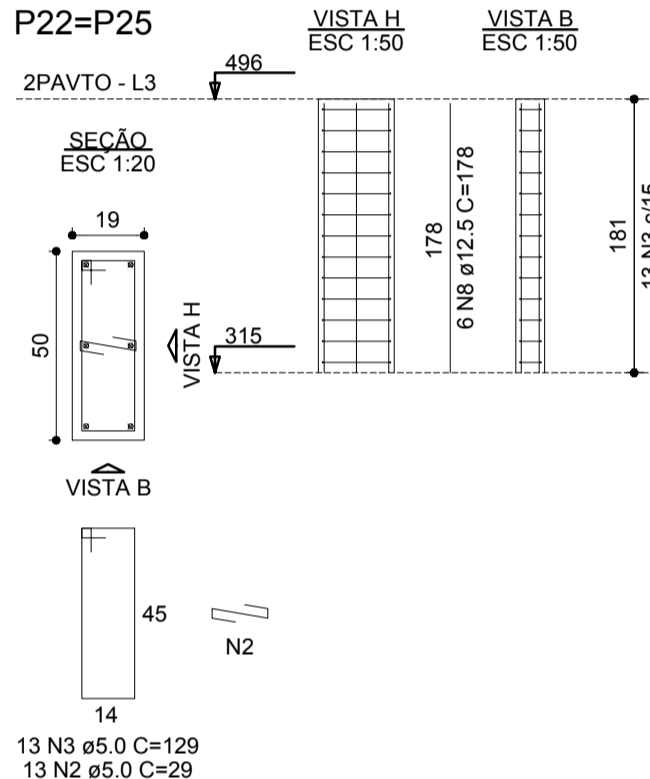
P1=P2=P9=P11=P15=  
=P17=P32=P37=P45=  
=P46=P53=P54=P55



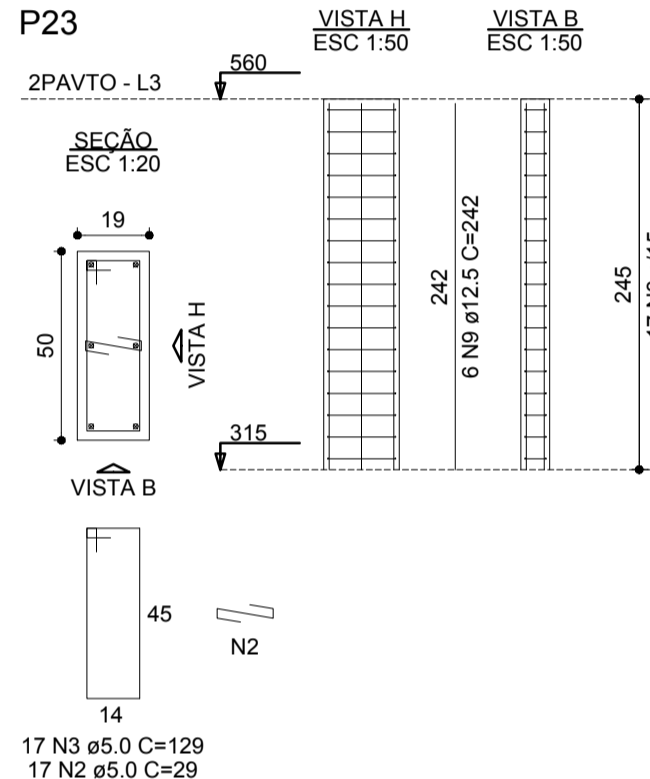
P13=P14=P18=P31=  
=P33=P38=P39=P43



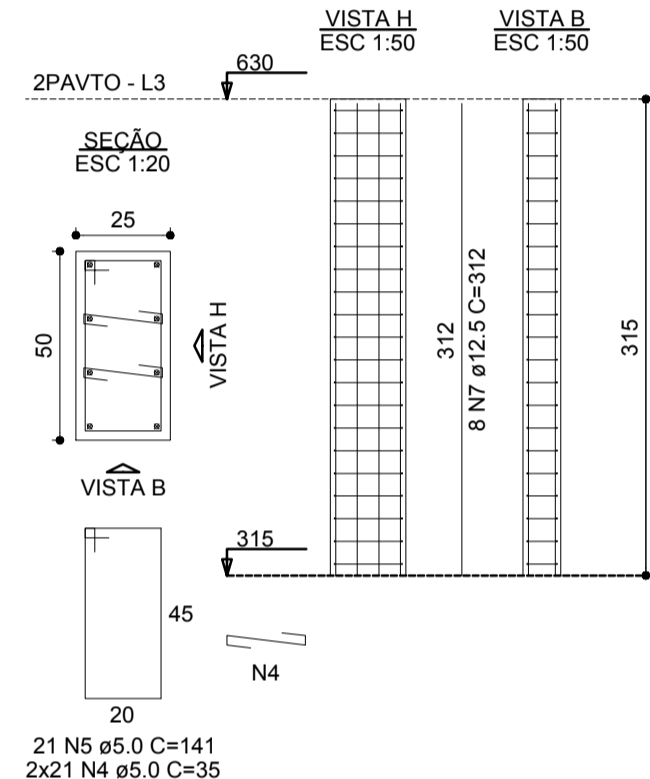
P22=P25



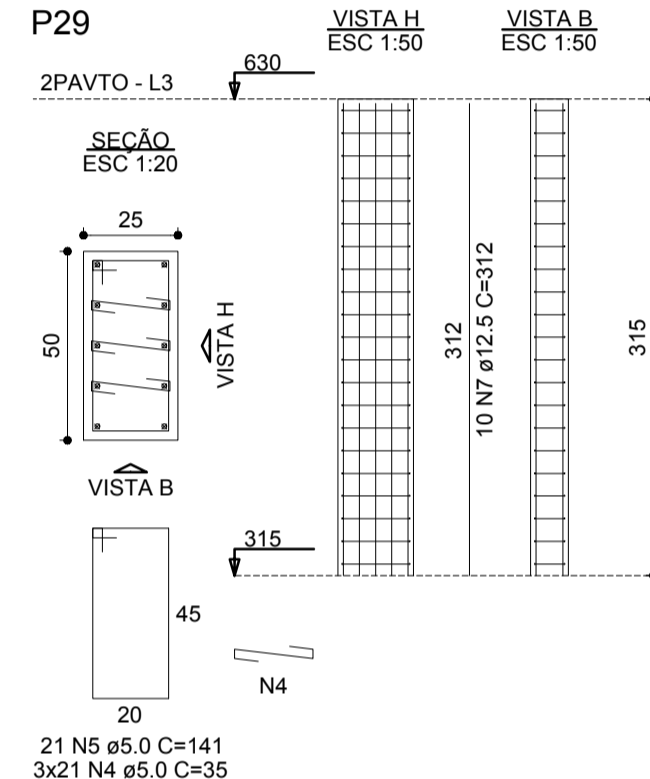
P23



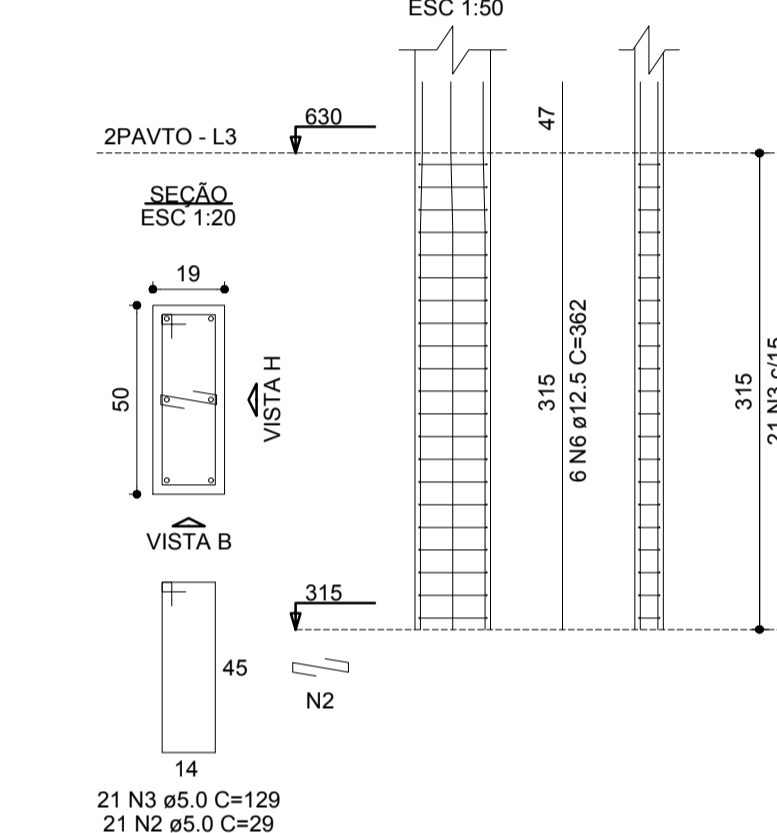
P26=P27=P28



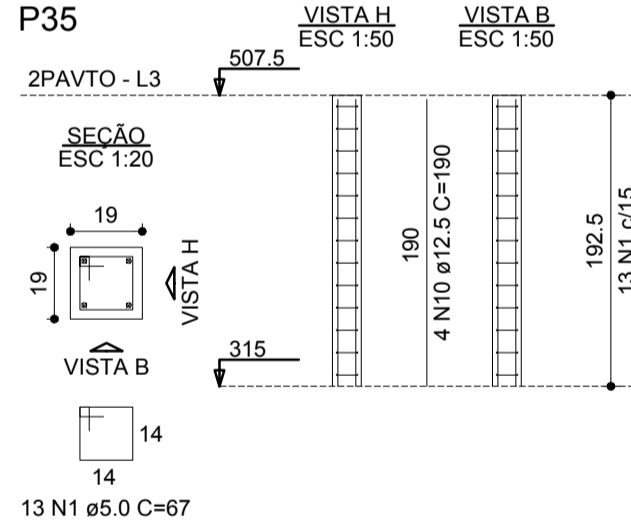
P29



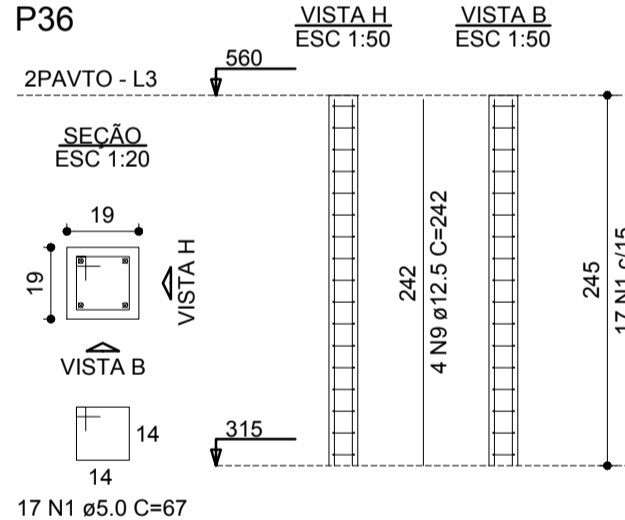
P3=P4=P5=P6=P7=P16=  
=P19=P20=P21=P24=P30=  
=P34=P40=P41=P47=P48=  
=P49=P50=P51



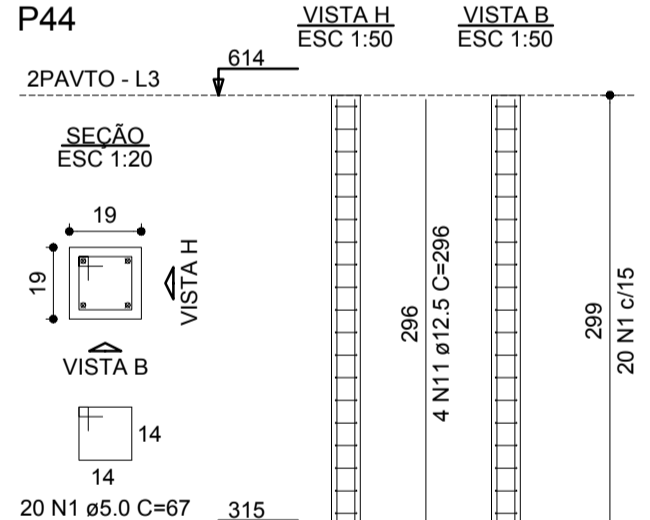
P35



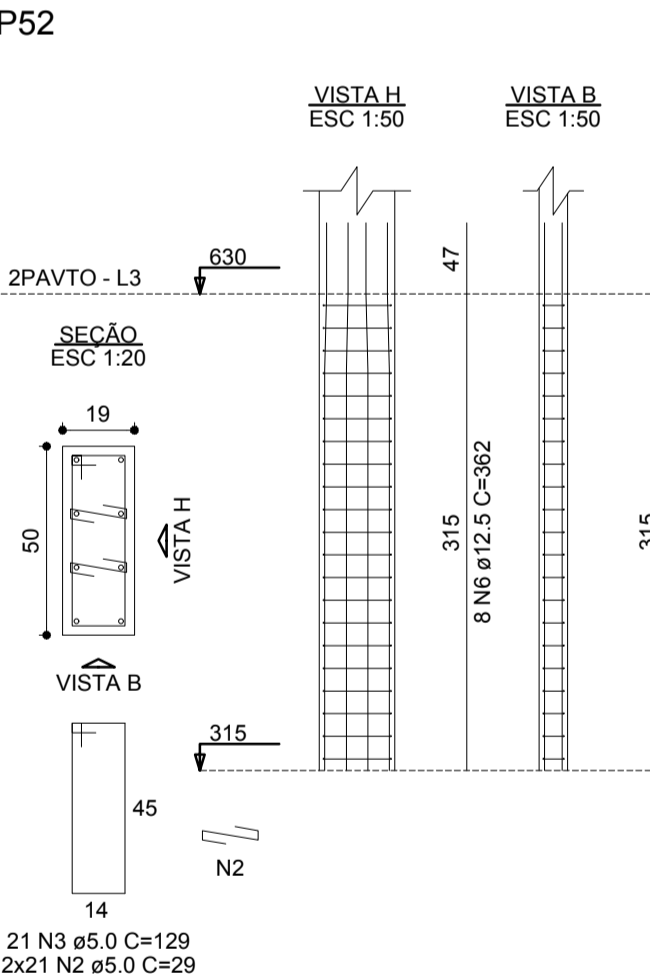
P36



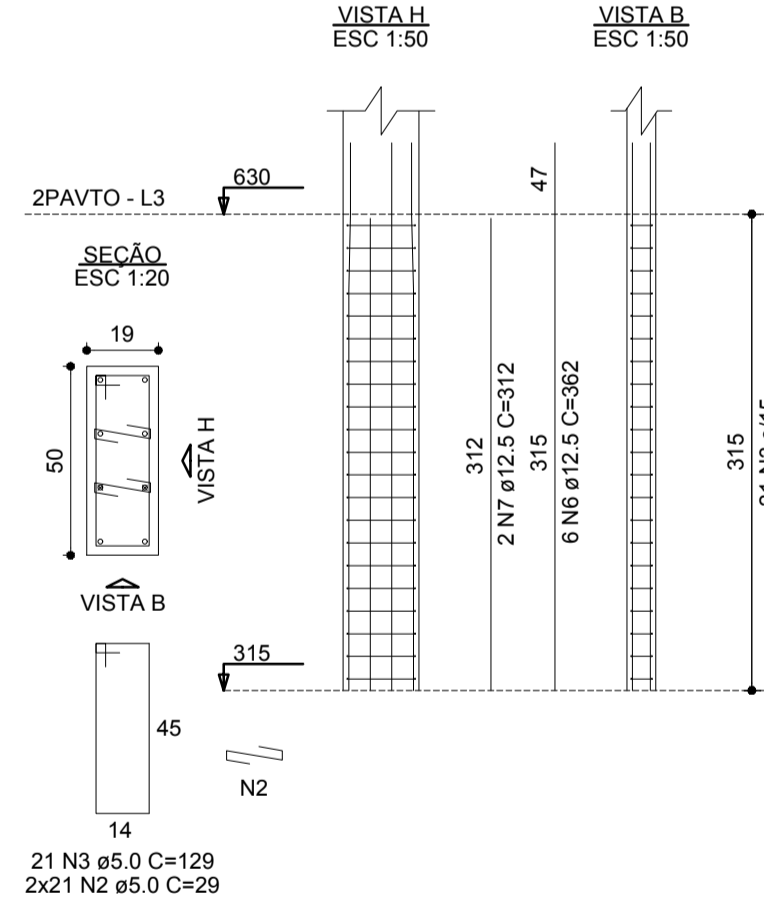
P44



P52



P8=P10=P12=P42



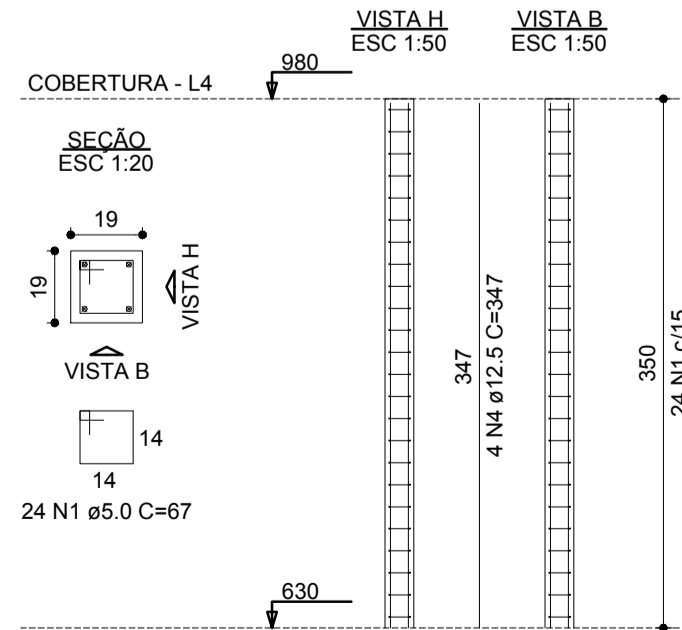
RELAÇÃO DO AÇO					
AÇO	N	DIAM (mm)	QUANT	C.UNIT (cm)	C.TOTAL (cm)
CA60	1	5.0	491	67	32897
	2	5.0	652	29	18908
	3	5.0	547	129	70563
	4	5.0	189	35	6615
	5	5.0	84	141	11844
CA50	6	12.5	198	362	71676
	7	12.5	74	312	23088
	8	12.5	12	178	2136
	9	12.5	10	242	2420
	10	12.5	4	190	760
	11	12.5	4	296	1184

RESUMO DO AÇO			
AÇO	DIAM (mm)	C.TOTAL (m)	PESO + 10% (kg)
CA50	12.5	1012.6	1073.1
CA60	5.0	1408.3	238.8

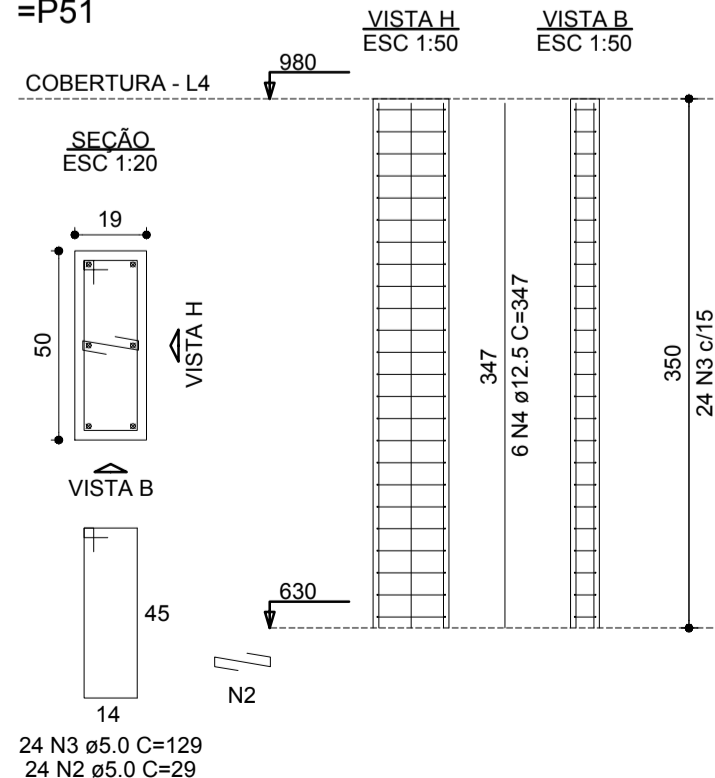
PESO TOTAL (kg)	
CA50	1073.1
CA60	238.8

Volume de concreto (C-25) = 11.99 m³  
Área de forma = 187.48 m²

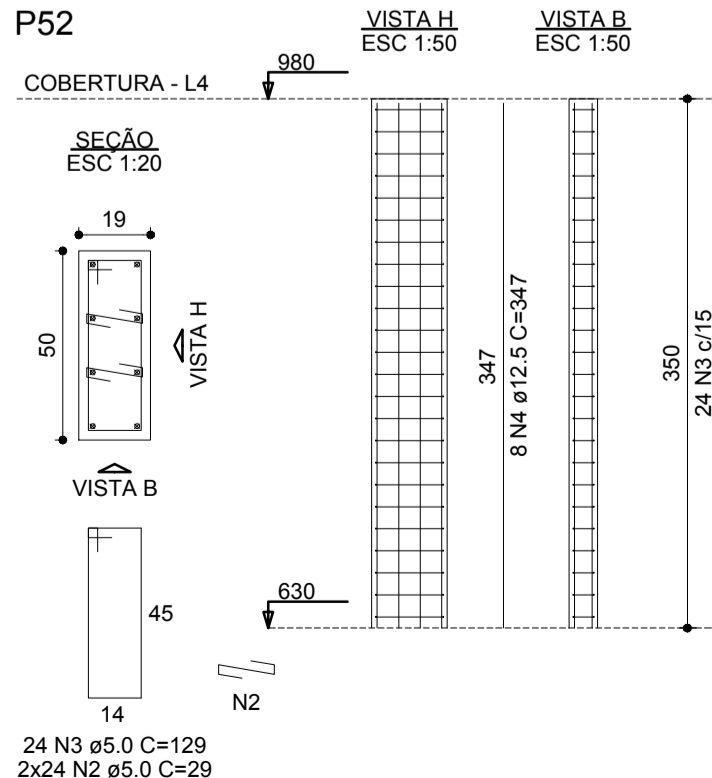
P1=P2=P9=P11=P15=P17=  
=P32=P37=P45=P46=P53=  
=P54=P55



P3=P4=P5=P6=P7=P8=P10=  
=P12=P16=P19=P20=P21=  
=P24=P30=P34=P40=P41=  
=P42=P47=P48=P49=P50=  
=P51



P52



RELAÇÃO DO AÇO					
AÇO	N	DIAM (mm)	QUANT	C.UNIT (cm)	C.TOTAL (cm)
CA60	1	5.0	312	67	20904
	2	5.0	600	29	17400
	3	5.0	576	129	74304
	4	12.5	198	347	68706

RESUMO DO AÇO			
AÇO	DIAM (mm)	C.TOTAL (m)	PESO + 10% (kg)
CA50	12.5	687.1	728.1
CA60	5.0	1126.1	190.9

PESO TOTAL (kg)	
CA50	728.1
CA60	190.9

Volume de concreto (C-25) = 9.62 m³  
Área de forma = 150.50 m²

	PREFEITURA MUNICIPAL DE DIVINO MG		
CIP: 01.01.2022/21 ARQ. CLAUDIO PROJETO BASICO			
Nº	DATA	RESPONSÁVEL	DESCRIÇÃO DA REVISÃO
FASE: PROJETO ESTRUTURAL			
PROPRIETÁRIO: PREFEITURA MUNICIPAL DE DIVINO MG			
CONTEÚDO: Detalhes dos Pilares			
PROJETO: RUA ATRÁTIMO VITOR DE OLIVEIRA ESQUINA COM RUA ADRIANO CAMPOS PEREIRA		ORÇ: 1/8.114.272/0001-08	
TÍTULO: CENTRE DE REFERENCIA DE EDUCAÇÃO E CULTURA			
AUTOR PROJETO ARQUITETÔNICO / R.T: CLÁUDIO DE MELO ROCHA CAUIBR 01.196-3			
DETALHAMENTO: AÇO: CA-50 e CA-60 CONCRETO: Fck = 25,0 Mpa			
VERSÃO: 1	DATA: 10/06/2022	AUTOCAD:	FOLHA: 14/32
ARQUIVO: BASE GERAL/ CIC DIVINO MG			